

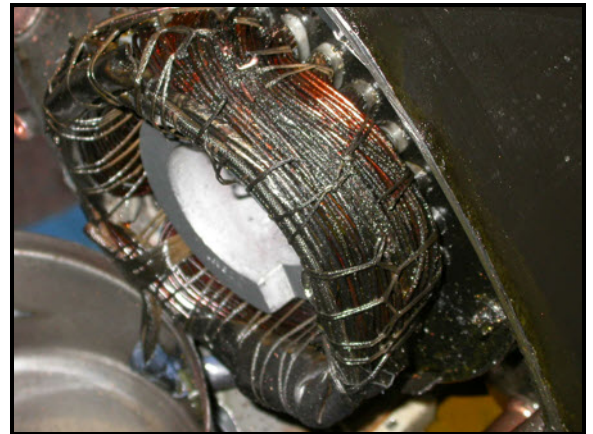


# TECH FACTS

## Lightning Strike Verification In Air Conditioners

One frequently asked question received by DPI concerns lightning damage. Adjusters want to know if there is a way to verify on-site service technician reports that damage to an air conditioner unit was caused by lightning. The answer is that some components exhibit characteristic damage that may be linked to lightning or some other electrical surge event. The most distinct feature is damage to the compressor coils. The compressor must be cut open to observe this. Relays and control boards may also be damaged. Lightning seeks the quickest path to ground, so the damage presentation may not always be the same. A weather lightning strike report for the site that corroborates with the time of failure is additional evidence to confirm lightning damage. A home with a modern grounding system will be much less likely to sustain lightning damage. Also, it is best to send the entire unit for a thorough inspection.

### Damage Related to Lightning Strike or Electrical Surge Event



### Damage Not Related to Lightning Strike

